

# UR-W547C

## UNIC MINI-CRAWLER CRANE

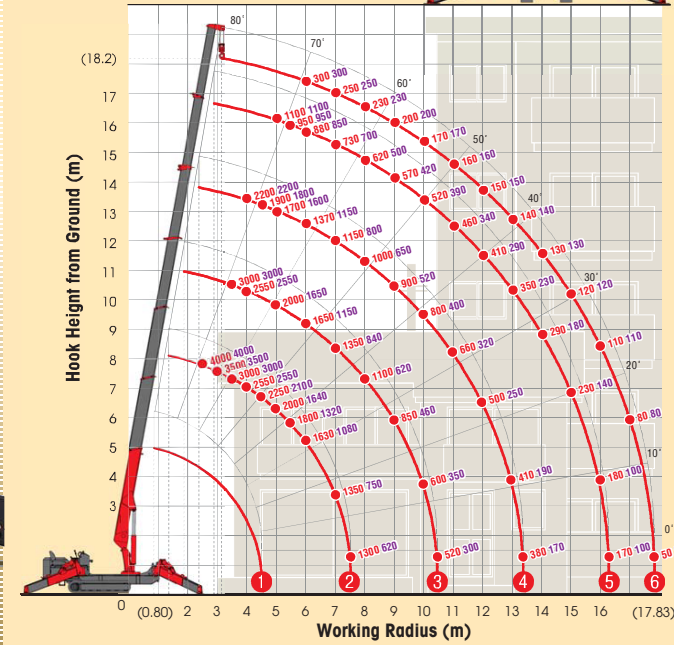
**UR-W547C provides maximum hook height of 18.2m with its seven section hydraulic boom.**

Its compact 7 section long hydraulic boom provides the wide working radius of 17.83m and fantastic hook height of 18.2m. The long and yet compact boom gains a huge variety of lifting situation.



### WORKING RANGE & NET RATED LOADS (kg)

Outrigger ● Max-extended NOT max-extended



Three colored lamp



Digital load meter



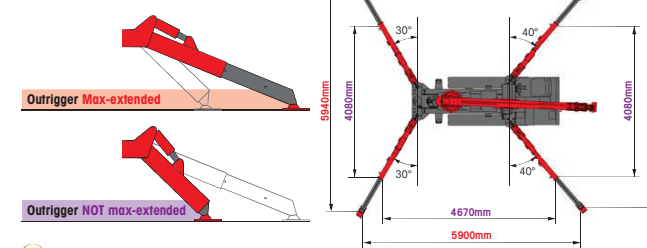
with electric power unit



### SPECIFICATIONS

Crane model	UR-W547CD
Lifting capacity	Max. 4.05t at 2.5m
Working radius	Min. 0.80m, Max. 17.83m
Hook height (Approx.)	Above ground level: Max. 18.2m Below ground level: Max. 22.9m with 4-part line
Length	Min. 3.99m to Max. 18.02m
Boom	Extending speed: 14.03m / 35.0 sec. [50Hz] 14.03m / 61.0 sec. [60Hz] 14.03m / 61.0 sec. Raising angle / speed: 0° to 80° / 18.0 sec. [50Hz] 0° to 80° / 30.0 sec. [60Hz] 0° to 80° / 25.0 sec. Structure: 7-section box beam type telescoping boom
Winch	Single line speed: 56.0m / min (at 5th layer) [50Hz] 30.0m / min (at 5th layer) [60Hz] 36.0m / min (at 5th layer) Hook speed: 14.0m / min at 5th layer with 4-part line [50Hz] 7.5m / min (at 5th layer with 4-part line) [60Hz] 9.0m / min (at 5th layer with 4-part line) Structure: Hydraulic motor driven, spur gear reduction, with automatic mechanical brake and wire rope retaining roller Wire rope: Construction: IWRC L6 x P-WS(26) / Diameter x Length: 8mm x 105.0m / Breaking strength: 53.0kN (5400 kgf) Hook block: 4.00t capacity, 2 sheaves with safety latch
Swiveling	Range: 360° continuous rotation on a ball bearing race Speed (with electric power unit): 2.5 rpm [50Hz] 2.0 rpm [60Hz] 2.3 rpm Structure: Hydraulic motor driven, worm gear reduction, spur gear reduction, and worm self-locking brake (supported by ball bearings)
Outriggers	Horizontal / Vertical: A double acting hydraulic cylinder, direct pushing type (Directly connected with hydraulic automatic lock device)
Hydraulic pump	Type: Variable delivery piston pump Rated pressure: 21.6 MPa (220 kgf/cm <sup>2</sup> ) Rated delivery: 60 liters/min Rated revolution: 2500 rpm
Hydraulic oil tank capacity	75 liters
Safety devices	Pressure relief valve for hydraulic circuit / Counterbalance valves for boom raising and boom telescoping cylinders / Pilot-operated check valves for outrigger cylinders (Horizontal) Double pilot-operated check valves for outrigger cylinders (Vertical) / Boom angle indicator with load indicator / Hook safety latch / Automatic mechanical brake for winch Automatic stop for overwinding / Overwinding alarm / Automatic stop for leaving minimum wire rope / Emergency stop button / Inter-lock device of crane and crawling levers Inter-lock device of crane and outriggers / Three colored lamp / Level / Digital load meter / Automatic stop for overloading / Headlight

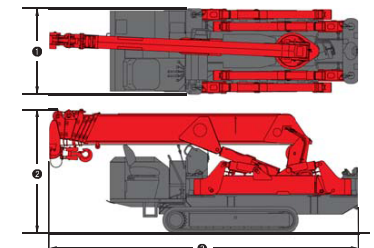
### OUTRIGGER POSITIONS



### CRAWLING GEAR

Crane model	UR-W547CD
Crawling speed	0-3.0 km/h, forward / backward [with electric power unit] [50Hz] 0-1.3 km/h [60Hz] 0-1.5 km/h
Hill climbing ability	23°
Tread length	1750mm
Ground contact pressure	47.0 kPa [0.48 kgf/cm <sup>2</sup> ] [with electric power unit] 48.1 kPa [0.49 kgf/cm <sup>2</sup> ]
Engine manufacturer / model	Yanmar / 3TNV76
Displacement	1115cc
Maximum output	16.17kW(20.6PS) / 2500 rpm, Rated output
Fuel	Diesel
Fuel tank capacity	40 liters
Steering	Hydraulic drive independent of left / right
Starter	Starter motor

### DIMENSIONS



Crane model	UR-W547CD
① Total width	1380mm
② Total height	1980mm
③ Total Length	4955mm
Mass of crane	5020kg [5170kg] [with electric power unit]

### Electric power unit specifications

Rated power	7.5kW (3-phase 4 poles)
Voltage	AC 200V or 400V (50Hz / 60Hz) 3 phase 4P